



Population

[Population by Year](#)

[Natural Increase](#)

[Population by Gender](#)

[Population by Age](#)

[Population by Urban/Rural Areas](#)

[Population by Regions](#)

[Migration](#)



Macroeconomics



Governmental Interventions



Employment and Labour Market

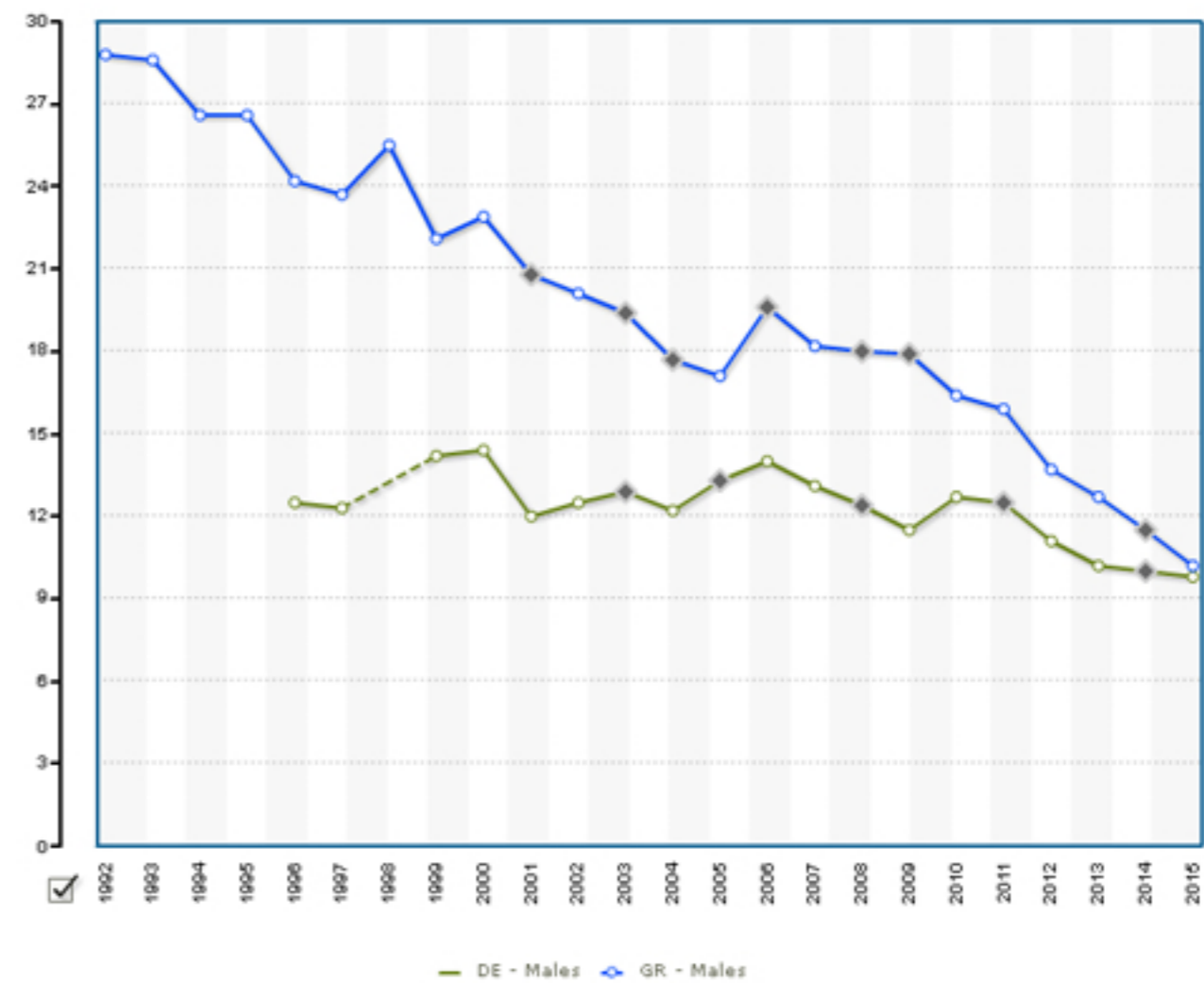


Education



Population by Year

- 1992
- 1993
- 1994
- 1995
- 1996
- 1997
- 1998
- 1999
- 2000
- 2001
- 2002
- 2003
- 2004



[Ageing indicators](#)

Data Sources: INE - Annual Estimates of Resident Population
Last updated: 2016-06-16

USEFUL LINKS

