



Population: Georgia's ID

- Population by Year
- Natural Increase
- Population by Gender
- Population by Age
- Population by Urban/Rural Areas
- Population by Regions



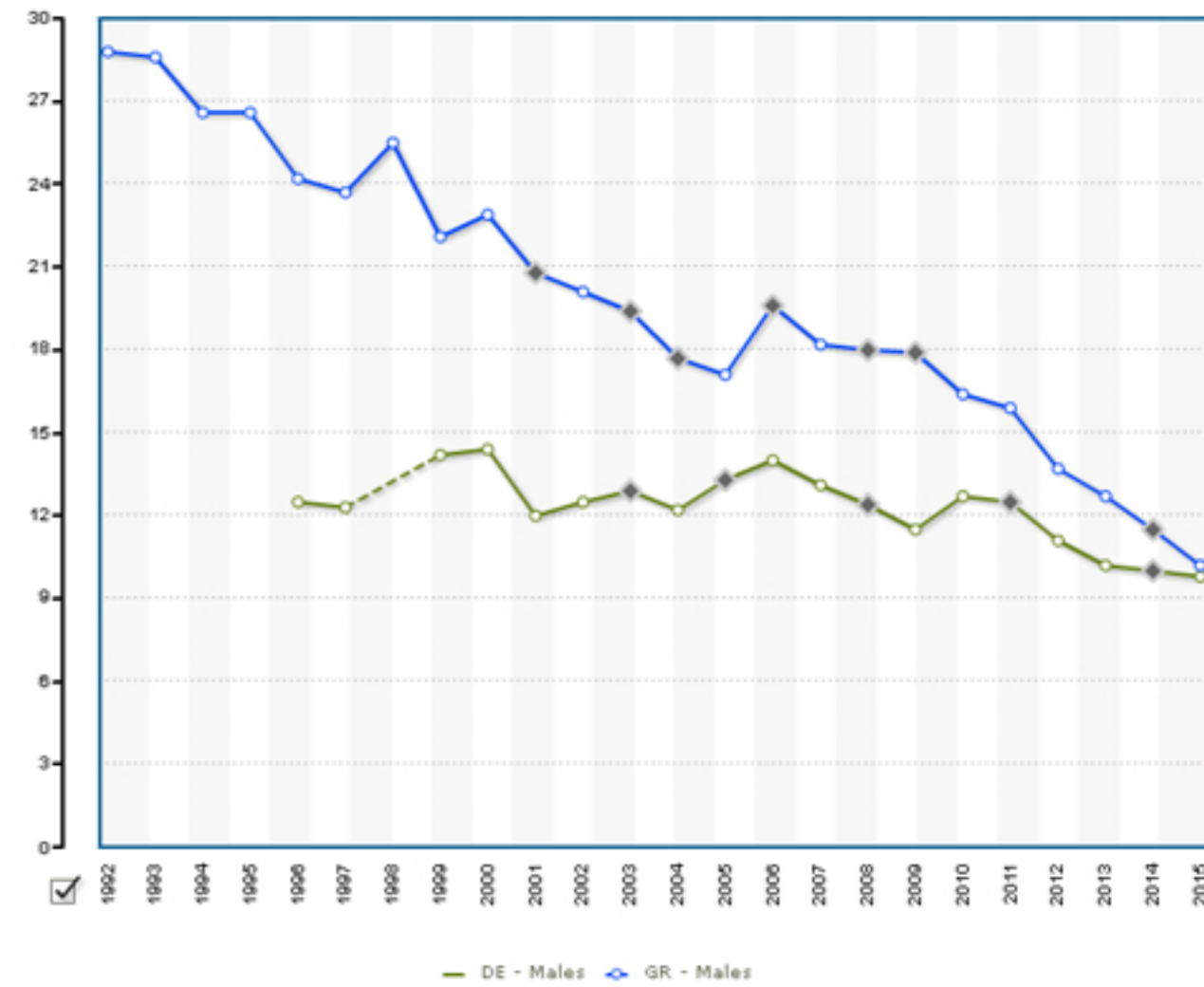
Migration

- Migration



Population by Year

- 1992
- 1993
- 1994
- 1995
- 1996
- 1997
- 1998
- 1999
- 2000
- 2001
- 2002
- 2003
- 2004



Ageing indicators  
 Data Sources: INE - Annual Estimates of Resident Population  
 Last updated: 2016-06-16

USEFUL LINKS

